

Contents

Finding Parking Spaces	2
When will our parking deck be open?	2
Where do we enter the deck?	2
Where are the Saint Mark spaces located?	2
My vehicle is over 7' in height, so I cannot park in the deck. Where do I park?	5
Will my car be safe in the deck?	5
Does the deck circle around so if there are no open spaces, I can easily drive to other areas of the deck?	5
Do I need to back into a parking space when I park?	5
Parking Fees and Validation	5
How will the parking validation process work?	5
I am not a member, but I have been attending Saint Mark for years. Can I register my vehicle?	6
Do guests (or family members in an unregistered vehicle) have to pay for parking on Sunday mornings when they attend services?	6
Do unregistered guests and volunteers pay for parking for other church meetings or events?	6
Why are we charging anyone for parking?	6
What makes Saint Mark parking attractive to the Fox Theater patrons when there is parking much closer?	6
Will Saint Mark staff have parking in the deck, and will they be required to validate?	7
If I just need to drop something off by the church, do I have to go through the validation process?	7
I cannot use the QR code feature with my phone. Can I get a paper ticket and validation like we received at the AT&T lot?	7
I go in and out of the church throughout any given day as I volunteer my time. What happens when my 4-hour code expires, and I cannot re-use the code?	7
I go in and out of the deck during the day. Do I have to re-validate each time?	7
If we have big church events, like a wedding, funeral, or concert, will guests have to deal with validations?	8
Will monthly parking passes be sold, such as to The Hadley residents or Georgia Tech students or employees at businesses in the area?	8
Can I leave my car in the deck for a week while I go on mission trips?	8
If someone parks in our deck and doesn't pay, who is going to enforce collection?	8
Accessing the Church	8
After I park, how will I get inside the church?	8
Leaving the Deck	9
Getting 150 cars out of the deck on Sundays is going to be hard. How will we avoid back-ups?	9

Finding Parking Spaces

When will our parking deck be open?

Our parking deck, located behind our church and accessible off 5th Street, will be open for parking beginning with our Sunday worship services on May 28, 2023. We will have a celebration and official ribbon-cutting on June 4th. Don't miss it – this is an important part of our Saint Mark history!

Where do we enter the deck?

Drivers can enter the parking deck from 5th Street entrance or through our Saint Mark Motor Courtyard entrance – so please be careful and watch for traffic as you enter the deck!

Where are the Saint Mark spaces located?

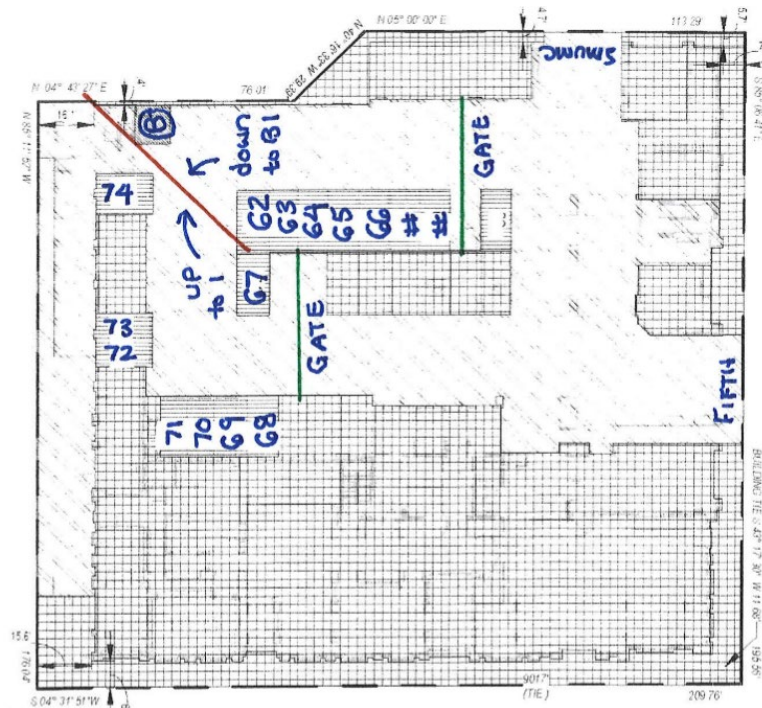
Saint Mark has 150 parking spots on different levels. Our Saint Mark spaces are numbered with the prefix “SM” and followed by the space number. However, they may be a little hard to see. Just remember, parking for The Hadley is behind another gate so it's a pretty sure bet that if you can access a space, it is ours!

Level B

You will enter the deck on Level B, and you will find spaces on this level. You will be able to drive down to Level B1 or up to Level 1.

Please try to leave these spaces for those with mobility challenges until our Education Building entrance is completed.

*In a few months, you will be able to take the elevator to Level 3 to reach our 2nd floor entrance in the Education Building. **But not yet!***



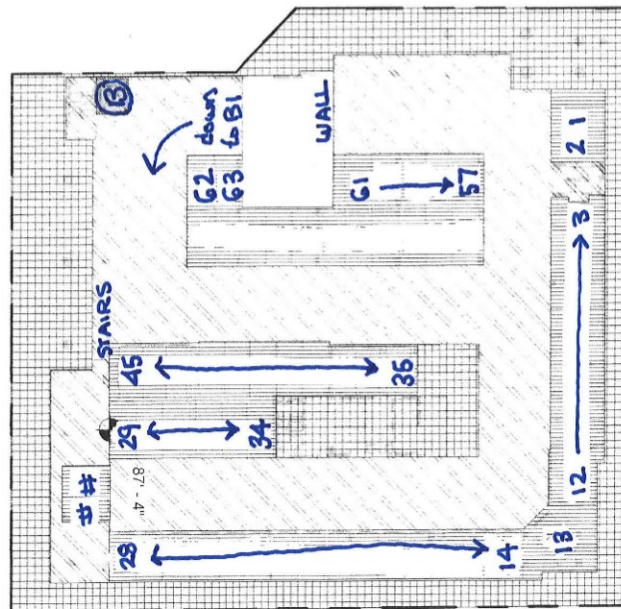
BASEMENT (B)

Saint Mark UMC
Parking Frequently Asked Questions

Level B1

From Level B Entrance, you go down one level to **Level B1**. You will also see the elevator in the corner.

*In a few months, you will be able to take the elevator to Level 3 to reach our 2nd floor entrance in the Education Building. **But not yet!***

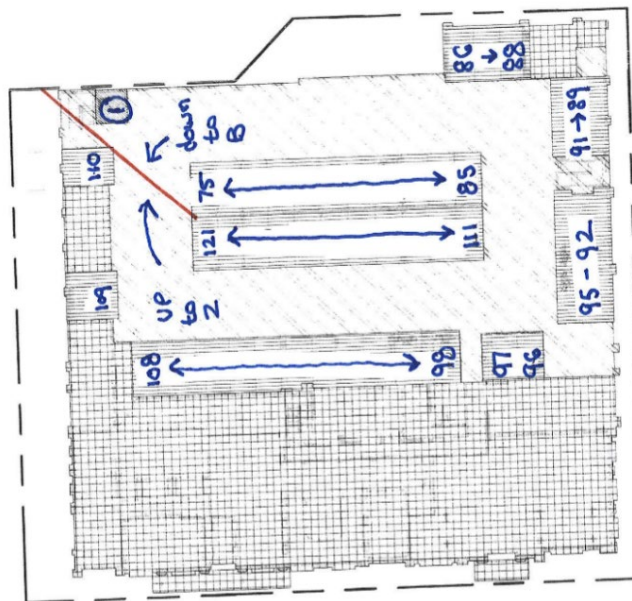


SUB BASEMENT
(B1)

Level 1

From the main entrance Level B, you can also go up to **Level 1** and find spaces on this level. You will also see the elevator in the corner.

*In a few months, you will be able to take the elevator to Level 3 to reach our 2nd floor entrance in the Education Building. **But not yet!***



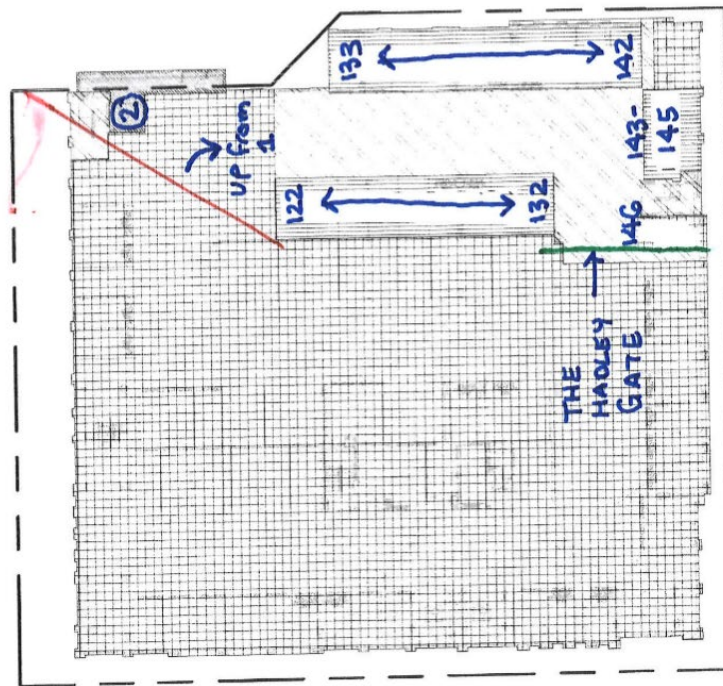
LEVEL 1

Saint Mark UMC
Parking Frequently Asked Questions

Level 2:

From Level 1, you can also go up to **Level 2** and find spaces on this level. You will also see the elevator in the corner. When you reach this level, you have reached the last parking spaces.

*In a few months, you will be able to take the elevator to Level 3 to reach our 2nd floor entrance in the Education Building. **But not yet!***

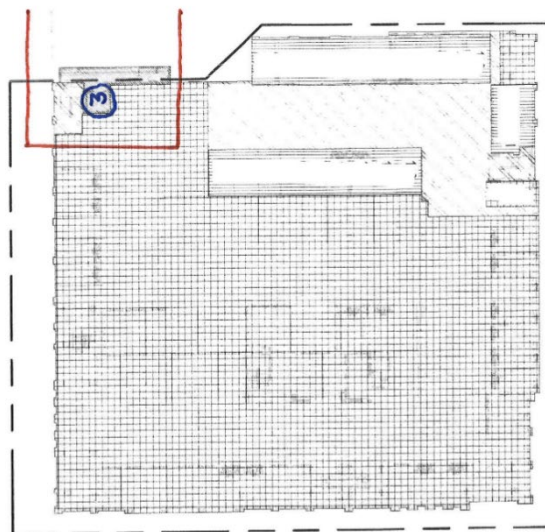


LEVEL 2

Note: Level 2 parking does NOT mean the second floor of the Education Wing entrance. So there is no reason to try to go to the top to get closer to the Education Wing entrance. You'll have to take the elevator to Level 3 to get Floor 2. 😊 And there is no parking on Level 3 of the garage, so if you don't like elevators or stairs, pick a space within a comfortable distance to the Motor Courtyard Entrance.

Level 3

*In a few months, you will be able to take the elevator to Level 3 to reach our 2nd floor entrance in the Education Building. **But not yet!***



LEVEL 3
BRIDGE TO SAINT MARK

My vehicle is over 7' in height, so I cannot park in the deck. Where do I park?

On Sunday mornings, there will still be parking on the street, and this is probably the best option. No parking is allowed on the Motor Courtyard near the entrance as this is reserved for emergency vehicles.

Will my car be safe in the deck?

While the deck will be monitored by cameras, this does not mean we will be immune from issues encountered in other Atlanta decks. Be sure to remove all valuables from your car, lock it, and secure your keys. At night, follow the same safety rules you would in any deck, including walking with others.

It is important to remember that, just like most other Atlanta parking decks, we grant a license to park, and no bailment is created. Saint Mark cannot guarantee the safety of you, your vehicle, or your possessions.

Weapons are prohibited on all Saint Mark property, including our parking deck. Never leave a weapon in your parked vehicle.

Does the deck circle around so if there are no open spaces, I can easily drive to other areas of the deck?

This is a little tricky. The Saint Mark parking deck does not have circular access and we will have bi-directional traffic (meaning cars going both ways). The different levels will reach a dead end and require vehicles to turn around. Please use care and courtesy with others as turnarounds will be likely!

Do I need to back into a parking space when I park?

This is certainly not a requirement but if you like to get out fast, then backing into a space is recommended. Keep in mind that when the deck is full, everyone backing out of spaces to leave at the same time will be a little intense! Instead, think about hanging out to socialize after church while our friends in a hurry work their way out of the deck!

Parking Fees and Validation

How will the parking validation process work?

Members will be allowed to register one vehicle license plate per family. The deck is equipped with technology that will take a picture of the vehicle and the license plate upon entering the deck. Registered vehicles will be automatically validated, and the driver will not need to take additional steps. This applies for all days the deck is open.

We will be sending a registration form link through the Remarks and Sunday bulletin between May 17 and May 31. Each month, the church office will update the file for any changes. What you need to do:

1. Complete the registration for your family's license plate before May 25.

2. Notify the church office any time you need to change the registered vehicle and/or license plate for your family.

I am not a member, but I have been attending Saint Mark for years. Can I register my vehicle?

While we wish you would “take the plunge” and join our church officially, we still consider you to be our family. Call our church office and they will assist you with your parking registration process.

Do guests (or family members in an unregistered vehicle) have to pay for parking on Sunday mornings when they attend services?

No. You do not pay for parking on Sunday mornings from 7am – 2pm when you join worship services and education groups. After 2pm, however, the “pay for parking” validation kicks in, so please monitor your time and validate as needed.

Do unregistered guests and volunteers pay for parking for other church meetings or events?

No. You do not pay for parking for any church-sponsored event. This includes choir, Breakfast Club, Supper Club, education sessions, meetings, Wednesday night dinners, church member funerals, and the list goes on and on.....

However, if your vehicle is not registered (*unless between 7am – 2:00pm on Sunday*), you will be required to enter a validation code UNLESS it is a large enough church event for us to cancel validation for a designated period (such as for Christmas Eve services, weddings, funerals, etc). If a code is needed, it will be The code will be inside the church on signs located near entrances.

Why are we charging anyone for parking?

When we do not have church events or have parking spaces we do not need for our purpose, our parking deck is available for public parking at market rates for the area. Generating income from the new deck during the week when we are not using it was always part of the vision—part of being good stewards of the resources God gives us. The revenue will first cover expenses, such as parking deck management, security cameras, insurance, electricity, internet, and contract employees for Sundays and special events. The additional funds will to be used for ministry and for upkeep of the property (which enables ministry). The deck is expected to be profitable over time, but our parking management company expects it will take up to 18 months to reach its full potential. You can help us by telling your friends and encouraging them to “Park at Saint Mark” to support good causes in our community.

What makes Saint Mark parking attractive to the Fox Theater patrons when there is parking much closer?

There are many venues in Midtown that may attract patrons. Like most parking decks, it depends on what is available for the given time. However, some patrons like to support good causes whenever they can – and “Park at Saint Mark” provides this incentive.

Will Saint Mark staff have parking in the deck, and will they be required to validate?

We have spaces reserved for Saint Mark staff with signage to designate which spaces. Staff validations will work the same as the member vehicle registration process.

If I just need to drop something off by the church, do I have to go through the validation process?

Remember:

- *If you are driving your family's registered vehicle, you do not have to worry about any type of validation at any time, as it will happen automatically.*
-

There is no charge for the first 15 minutes between entering the deck and entering a validation number or credit card number for payment. This should provide time for quick drop-offs.

I cannot use the QR code feature with my phone. Can I get a paper ticket and validation like we received at the AT&T lot?

Remember:

- *If you are driving your family's registered vehicle, you do not have to worry about any type of validation as it will happen automatically.*
 - *Church guests who are joining for worship will not have to validate between 7am – 2pm on Sundays. We want to be a welcoming, no parking-stress Midtown church!*
-

For others, we understand that not everyone likes the QR code option, ***so we have a text option as well.*** The number to text does not change, so we can help you set a contact for “Saint Mark Parking” and then you just text Saint Mark Parking when you arrive, send a message “UMC” and it will walk you through the steps. We will have a parking support team, including all members of Church Council and other volunteers, ready to help you set up this option if you'd like. After a couple of times, it will get easier, and ***we will be here to help you!***

I go in and out of the church throughout any given day as I volunteer my time. What happens when my 4-hour code expires, and I cannot re-use the code?

Remember:

- *If you are driving your family's registered vehicle, you do not have to worry about any type of validation at any time, as it will happen automatically.*
-

If you know your volunteer time will likely exceed 4 hours, you need a different code than the 4-hour code posted on the entrance signs. Contact the church office in advance to secure the appropriate code to make this easy for you.

I go in and out of the deck during the day. Do I have to re-validate each time?

Remember:

Saint Mark UMC
Parking Frequently Asked Questions

- *If you are driving your family's registered vehicle, you do not have to worry about any type of validation at any time, as it will happen automatically.*
-

The parking security camera system takes a picture of your car and license plate each time you enter. Once you have registered a validation code for the day, the system should have a match with your license plate, so you do not need to re-validate if you are still within the time frame covered by your validation code. The validation time does not pause while you are gone, however. You need to be sure your validation code covers the time needed. Just like any parking deck in Atlanta, please be mindful of parking time. Planning is key.

If we have big church events, like a wedding, funeral, or concert, will guests have to deal with validations?

No. But we will have to coordinate with our parking management company, so they are aware and do not require validations during the time of the events. The church office will handle these arrangements on behalf of Saint Mark.

Will monthly parking passes be sold, such as to The Hadley residents or Georgia Tech students or employees at businesses in the area?

We are working with our parking management company to evaluate the pros/cons of this proposal. Our main objective is to have ample parking for our church activities, so we want to avoid the complexity of dealing with monthly parking passes. If we determine that all spaces are not needed for church activities, we might consider monthly passes. But our ministries come first.

Can I leave my car in the deck for a week while I go on mission trips?

While we can handle the validation code portion of this question, this may not be recommended due to long-term security. While the deck will be monitored by cameras, there is risk of break-ins which are common in our urban area.

If someone parks in our deck and doesn't pay, who is going to enforce collection?

We are outsourcing the management of our deck and the enforcement of charges. Since the license plate of any vehicle in the deck will be known, there will be ways to ticket and charge the offenders. However, our hope is that there will not be a high volume of offenders.

Accessing the Church

After I park, how will I get inside the church?

Until the parking bridge construction is completed and on Monday through Saturday, the entrance to the church offices remains unchanged. Please use stairs or take our parking elevator to the GROUND level (also called BASEMENT level) for pedestrian access to Saint Mark.

Once the parking lot is open to us, we will be able to begin the parking bridge from the deck to the second floor of the Education Building. Our dedicated elevator is in the southwest corner and will be

Saint Mark UMC
Parking Frequently Asked Questions

very visible (clad in our signature red) for you use. The elevator will take you to the THIRD parking level and you will pass through a short interior bridge vestibule to the church. You will be entering our Peachtree level (level 2). From here you may access this floor and use our internal church elevator and stairs to access other areas in the church. On Sundays, the second-floor deck entry vestibule doors will be open. On other days, a key access will be needed to enter the building through these doors. If you do not have a key, take the stairs or elevator to the basement level and access Saint Mark through the church office entrance.

Leaving the Deck

Getting 150 cars out of the deck on Sundays is going to be hard. How will we avoid back-ups?

If needed, we will have help. Our parking management company will arrange to have paid security directing traffic to ensure we are able to quickly exit the deck after services and special events. The attendant/ security can block off part of 5th and the first turn lane on Juniper Street. All traffic could be required to turn right on 5th and right on Juniper to ensure traffic does not back up in our deck. Also, consider backing into your parking space if you are comfortable doing so. This will speed up the exit process.